



# CONCRETE CONSTRUCTION AWARDS

**2025 ENTRY GUIDE**

IN PARTNERSHIP WITH

**BCITO**  
*He Hunga Hanga Mātou*  
**building people**

#concreteawards2025  
[www.concreteawards.org.nz](http://www.concreteawards.org.nz)

**THURSDAY 5 JUNE 2025**  
Cordis Hotel, Auckland



# CONTENTS

|   |    |
|---|----|
| WELCOME   | 4  |
| 2025 Concrete Construction Awards                         | 5  |
| Entries Open  | 5  |
| Why Enter?  | 5  |
| Sponsorship Opportunities                                 | 5  |
| AWARD CATEGORIES  | 6  |
| BCITO Premier Concrete Award                              | 6  |
| Excellence in Architectural Concrete (Monte Craven Award) | 7  |
| Excellence in Concrete Infrastructure                     | 7  |
| Excellence in Commercial Concrete                         | 8  |
| Excellence in Concrete Landscaping                        | 8  |
| Excellence in Residential Concrete                        | 9  |
| Excellence in Concrete for the Community                  | 9  |
| Excellence in Concrete Remediation and Reuse              | 10 |
| Excellence in Concrete Innovation                         | 10 |
| Excellence in Sustainable Concrete for the Planet         | 11 |
| Enduring Concrete Award                                   | 11 |
| JUDGING   | 11 |
| Judging Criteria  | 12 |
| ELIGIBILITY / TERMS & CONDITIONS                          | 12 |
| GENERAL CONDITIONS  | 12 |
| OWNERSHIP OF MATERIAL                                     | 13 |
| FORM OF ENTRY   | 13 |
| ENTRY FORM  | 14 |



# WELCOME

Celebrating success is key to inspiring excellence, innovation, and best practice across the building and construction sector.

Concrete NZ's awards programme highlights the people, teams, and projects shaping our built environment, recognising the expertise, collaboration, and ingenuity driving the industry forward, while emphasising concrete's role in resilient, low-carbon infrastructure for New Zealand's future.



Building on the success of the inaugural 2023 *Concrete Construction Awards*, we're preparing for the second iteration, acknowledging the achievements of Concrete NZ members and the wider sector, including contractors, engineers, architects, and developers.

By recognising excellence across disciplines, the *Concrete Construction Awards* reinforce the value of collaboration in delivering exceptional concrete solutions.

The following pages outline the award categories, with winners to be announced at the *Concrete Construction Awards* gala dinner, held at the Cordis Hotel on Thursday, 5 June 2025.

We extend our gratitude to our sponsors, in particular the awards Patron BCITO, and thank them for supporting this celebration of sector-wide achievement.

I look forward to joining you in showcasing the outstanding entries and reinforcing concrete's position as the durable, low-carbon material of choice for modern New Zealand.

**Rob Gaimster**  
**Concrete NZ, Chief Executive**



# 2025 CONCRETE CONSTRUCTION AWARDS

- **BCITO Premier Concrete Award**
- Excellence in Architectural Concrete (Monte Craven Award)
- Excellence in Concrete Infrastructure
- Excellence in Commercial Concrete
- Excellence in Residential Concrete
- Excellence in Concrete for the Community
- Excellence in Concrete Landscaping
- Excellence in Concrete Remediation and Reuse
- Excellence in Concrete Innovation
- Excellence in Sustainable Concrete for the Planet
- Enduring Concrete Award

## ENTRIES OPEN UNTIL 2 MAY 2025

### WHY ENTER?

- To acknowledge all the professionals who made the project come-to-life.
- Demonstrate the project's quality to the construction sector and beyond.
- Showcase the project team's expertise and commitment to potential clients.
- Celebrate with concrete industry and construction sector peers at the Awards Gala – an evening not to be missed.

Let's celebrate the collaboration and innovation of the entire project team.

### SPONSORSHIP OPPORTUNITIES

The *Concrete Constuction Awards* are the new benchmark for excellence in all aspects of concrete design, construction, rehabilitation and research.

They recognise the leaders and teams who are building and preserving New Zealand's future, low carbon, built environment.

Being a sponsor of the awards is your opportunity to leverage an important event and position yourself alongside significant projects and the exceptional individuals who designed and built them.

Contact Adam Leach, Concrete NZ's Communications Manager, to receive a Sponsorship Prospectus – [adam@concretenz.org.nz](mailto:adam@concretenz.org.nz)



# AWARD CATEGORIES

## BCITO PREMIER CONCRETE CONSTRUCTION AWARD

This is the *Concrete Construction Award's* top honour and recognises the overall winner of the nine category awards as outlined in this Guide.

The recipient of the *Premier Concrete Construction Award* is judged to exemplify outstanding achievement in the advancement of concrete design, construction, rehabilitation and research, supported by an uncompromising drive to contribute to New Zealand's sustainable development and net zero carbon target.

Pacifica Tower, Auckland.





## EXCELLENCE IN ARCHITECTURAL CONCRETE (MONTE CRAVEN AWARD)

Introduced in 1998 as part of the (now superseded) New Zealand Concrete Society Awards, this category seeks to encourage and recognise closer collaboration between architecture and engineering.

Such collaboration involves the design disciplines working together, sharing knowledge, learning from each other, and, by that, designing a building informed by professional inputs and consensus.

The *Monte Craven Award* may be assigned to any construction project which displays a significant demonstration of functional suitability, aesthetic appeal, environmental sensitivity, architectural flair and/or is of such a form or shape that makes its execution in concrete outstanding.

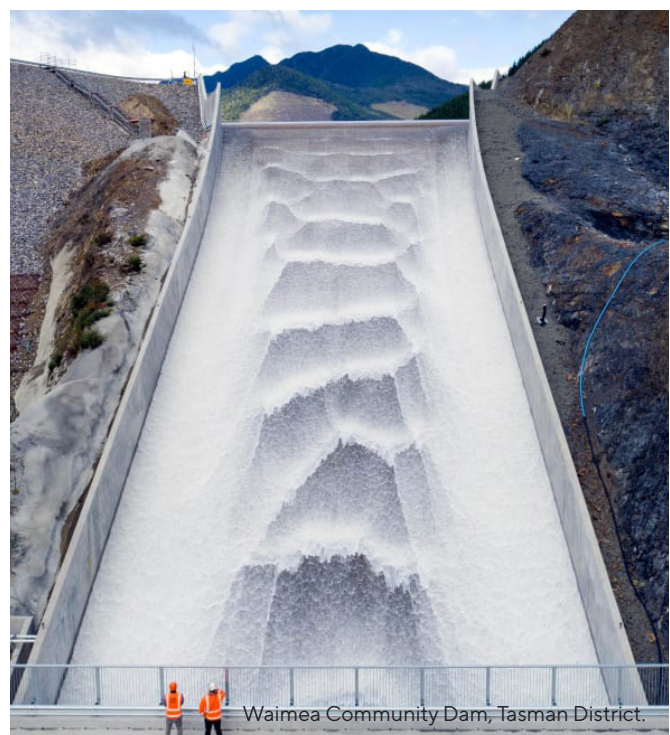
Te Pae North Piha Surf  
Life-Saving Tower, Auckland.  
Image: Sam Hartnett.



## EXCELLENCE IN CONCRETE INFRASTRUCTURE

Often unseen and unappreciated, New Zealand's concrete infrastructure is critical to the nation's prosperity and wellbeing, literally underpinning our transport network and three waters as well as offering protection against the impact of climate change.

This category award is presented to any project, including bridges, tunnels, wharves, dams, liquid retaining structures, sewage and water treatment plants and concrete roads, which through the exemplary use of concrete is judged to have advanced the development of New Zealand's portfolio of critical infrastructure.



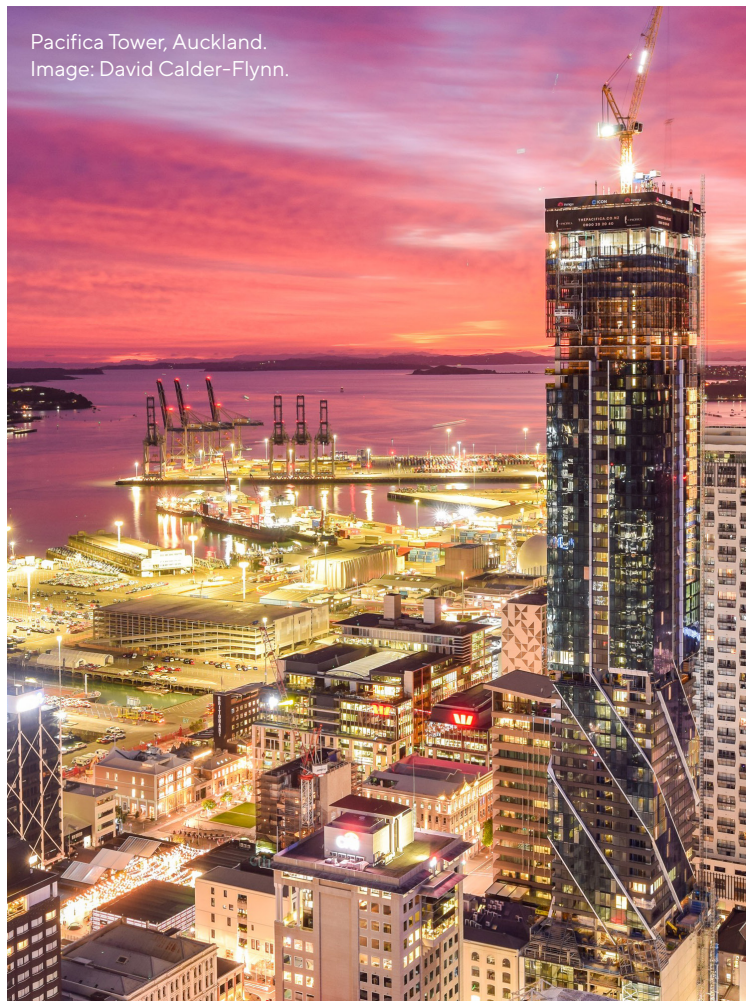


## EXCELLENCE IN COMMERCIAL CONCRETE

Along with the traditional medium and high-rise mixed-use commercial buildings, this category also includes increasingly large distribution and storage warehouses, the burgeoning retirement village sector as well as health care and retail/hospitality.

All of which demand a range of technical requirements, such as post-tensioning, floor surface regularity, vibration control and acoustic insulation which see concrete come in to its own.

This category awards shines the spotlight on commercial and industrial buildings which demonstrate impressive functional suitability, aesthetic appeal, environmental sensitivity and are of such a form or shape that makes their execution in concrete outstanding.



Pacifica Tower, Auckland.  
Image: David Calder-Flynn.

Ōpuke Thermal Pools & Spa,  
Methven.



## EXCELLENCE IN CONCRETE LANDSCAPING

Landscape architecture sees environmental planning combine with design practice (including material selection) and skilled construction to enrich an outside space, enabling people and nature to connect.

This category award acknowledges the use of concrete in a landscaping situation and may include (but is not limited to) concrete paving, retaining walls and the use of coloured/decorative concrete or special concrete features.



## EXCELLENCE IN RESIDENTIAL CONCRETE

While the property market has plateaued over recent years, New Zealanders' love affair with their homes remains intense and passionate.

Multi-unit developments have grown in popularity to complement stand-alone bespoke designs, all of which benefit from concrete's durability, thermal mass, fire resistance and architectural potential.

This category award honours residential buildings of which the primary construction material is in-situ or precast concrete, concrete masonry, or other cementitious substances. It is not limited to single dwellings, with entries for medium density housing given equal consideration.



Scarborough Béton Brut, Christchurch.  
Image: Lightforge Photography.



Downtown Infrastructure  
Development Programme, Auckland.

## EXCELLENCE IN CONCRETE FOR THE COMMUNITY

Building or improving community facilities for entertainment or education is an important and popular way for a town, city or region to improve its cultural and social resources.

This category award celebrates concrete design and construction in realising public offerings such as libraries, museums, art galleries and skate parks, that are accessible, reflect diversity and encourage people to live and play together effortlessly.

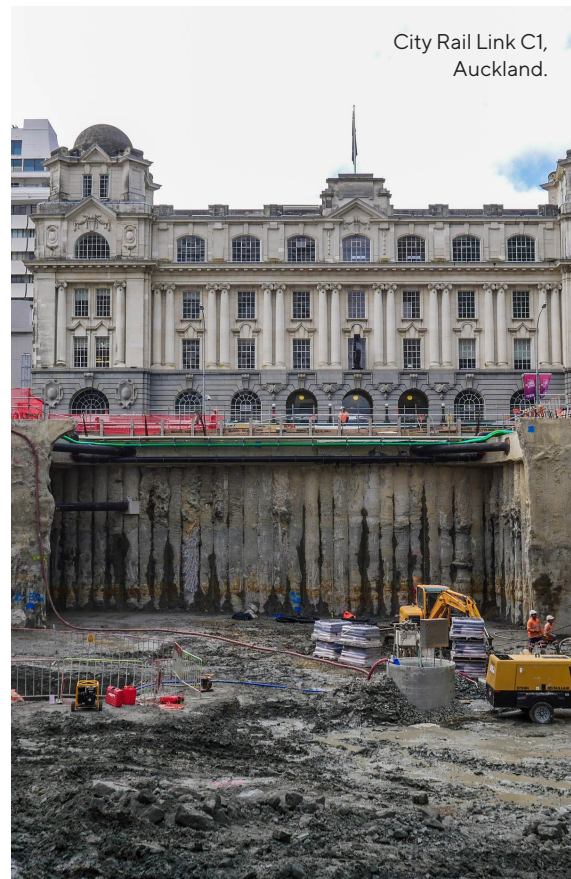


## EXCELLENCE IN CONCRETE REMEDIATION AND REUSE

As the push towards greater sustainability gathers pace, there is increasing pressure to repair, strengthen, refurbish, recycle and re-use all aspects of the built environment.

Concrete's durability, longevity and adaptability means that it is ideally suited to this responsible design and construction approach.

This award category recognises achievements across repair (e.g., St Andrew's on The Terrace in Wellington), seismic strengthening (e.g., Rose Chapel and Isaac House in Christchurch) and repurposing (e.g., Beca's Wellington office), which demonstrate the resilience of concrete to help prolong a structure's service-life, sustain new loading requirements, preserve architectural heritage, as well as avoid the environmental impact of new builds.



Allied Concrete e-crete™

## EXCELLENCE IN CONCRETE INNOVATION

Innovation in the construction sector is key to developing a competitive advantage. Destabilising former ways of thinking as a pathway to progress in New Zealand has been given increased urgency in the wake of seismic, climate change and pandemic induced socio-economic pressures.

Long term, whole-of-life perspectives and procurement practices for buildings and facilities are driving innovation across concrete materials, design and construction to create new opportunities, and to rethink traditional approaches and models.

This award category applauds those individuals, companies and educational institutions which have made a significant contribution to the understanding/use of concrete as evidenced by design innovations, original technology, new production and delivery mechanisms, research output, technical publications and/or educational activity.



## EXCELLENCE IN SUSTAINABLE CONCRETE FOR THE PLANET

This category award recognises exceptional projects that champion environmental stewardship or deliver outstanding climate performance.

Entries should demonstrate significant emissions reduction (e.g. by using low embodied emissions materials), repurposing waste or conserving natural resources. Beyond embodied carbon and resource efficiency, submissions can highlight concrete's role in achieving operational emissions targets as well as supporting architects, engineers, and property owners in delivering resilient, durable, low-impact structures.

Ngā Hau Māngere Bridge, Auckland.



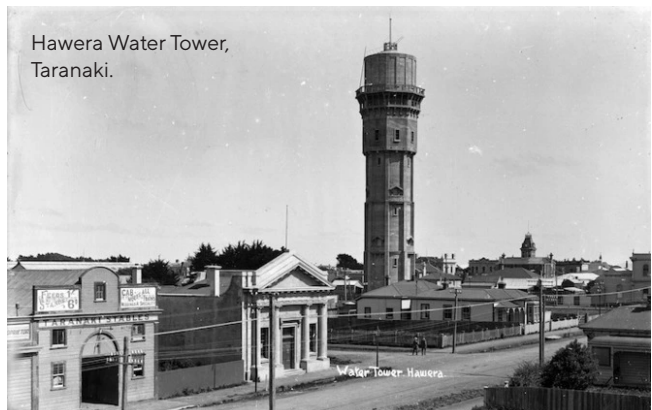
## ENDURING CONCRETE AWARD

This is a legacy award that celebrates the use of concrete in building and civil engineering structures more than 25 years old.

Concrete structures previously recognised with the Award are:

- Hawera Water Tower, Taranaki
- The Beehive, Wellington
- Fairfield Bridge, Hamilton
- Grafton Bridge, Auckland
- Kapuawhara Viaduct (Napier–Gisborne Rail Line), Gisborne
- Ohakea Air Force Hangars, Ohakea

Hawera Water Tower, Taranaki.



**The Enduring Concrete Award is not open to general entry, rather a judging subcommittee select contenders and the eventual recipient from their collective knowledge and familiarity with New Zealand's historic concrete structures.**

They are assisted in their task by Geoffrey Thornton's excellent books, particularly *Concrete Construction in New Zealand 1850-1939*, which highlights the pioneering use of concrete in New Zealand across the latter half of the 19<sup>th</sup> century and beginning of the 20<sup>th</sup> century.

# JUDGING

The *Concrete Construction Awards* judging panel will be comprised of representatives from across Concrete NZ's Sector Groups and Learned Society, as well as from Engineering New Zealand (ENZ) and the New Zealand Institute of Architects (NZIA).

No correspondence or discussion with respect to any decision of the judging panel will be entered into.

## JUDGING CRITERIA

In considering each entry the judging panel will take note of such matters, where applicable, as:

- Vision, ambition and originality
- Sustainability
- Practitioner skill
- Special engineering or functional significance
- Economic merit and construction efficiency
- Advance in concrete technology
- Significant and advantageous use of concrete
- Design and detailing
- Durability and weathertightness
- Low carbon credentials

## ELIGIBILITY/ TERMS & CONDITIONS

The eligibility of any project or initiative entered for consideration in the *Concrete Construction Awards* shall be subject to the following criteria:

- a) The project or initiative on which the entry is based shall have reached substantial completion within a period not greater than forty calendar months (i.e., built after 1 January 2021) directly preceding the closing date for the Awards. Completion is intended in a functional rather than a contractual sense and in doubtful cases the judging panel will adjudicate.
- b) The entry must relate to work completed in New Zealand.
- c) Joint entries recognising overall merit of a project or initiative are encouraged. To ensure mutual recognition and avoid duplication of entries, where parties have jointly contributed towards aspects of the project or initiative being submitted, one company only who was actively involved in the project shall be responsible for ensuring that there is substantial support for the form of the entry from the other parties, whose names shall all be listed on the entry form. This company shall also obtain written consent from the 'owner' for the entry, and agreement as to the award recipient of the trophy.
- d) The nominated award recipient must register for the awards gala.

## OWNERSHIP OF MATERIAL

All material submitted in connection with *Concrete Construction Awards* entries shall become the property of Concrete NZ, which reserves the right to make whatever use it may consider desirable without incurring any liability whatsoever with respect to the payment of any fees or royalty. Such use may include publication and/or display of any complete entry or part thereof.



# GENERAL CONDITIONS

The *Concrete Construction Awards* have been established by Concrete NZ as a means of:

- Celebrating excellence in concrete design, construction, rehabilitation and research.
- Recognising the professional expertise of individuals and companies involved in significant (concrete) construction projects and/or initiatives.
- Increasing the depth of knowledge and understanding across concrete design, construction, rehabilitation and/or research.
- Supporting the development and use of concrete in a manner which is appropriate to the natural and social environment and the needs of society.
- Raising awareness of concrete's general sustainability features (including progress towards achieving net-zero carbon by 2050), as well as its role in addressing the impacts of climate change.

The projects and/or initiatives submitted as entries in the awards do not necessarily have to be of large scale. They may embody any combination of attributes to suit the project purpose and the environment.

Entrants do not need to identify which category the project is entered in. The judging panel will allocate entries into the appropriate award category.

## FORM OF ENTRY

Entries, which must reach Concrete NZ NO LATER THAN Friday 2 May 2025, should comprise the following:

- Your completed entry (including entry form) in digital format.
- An entry fee (GST inc)
  - Members: for each entry \$200.00
  - Non-Members: for each entry \$300.00
- The statement for judging is not to exceed 1,000 words, and is to consist of a summary section, which does not exceed 200 words and further sections to cover, as appropriate the topics in (b) and (c) below. Where the entrant(s) consider it is appropriate, a supporting statement of not more than 100 words may be included from the client or client's representative indicating how the project or initiative met their expectations.
  - a) The summary section is to contain a justification for the project or initiative, and the features, which in the opinion of the entrant(s), merit recognition of the work as an outstanding achievement in the field of concrete.
  - b) A description of the purpose and requirements of the work, the rationale or design approach employed, and where construction work is involved, a justification for adopting the use of concrete with reference to the judging criteria where appropriate.
  - c) A brief statement, where it may assist the judging panels, covering any unusual features, unconventional approaches adopted or particular specification requirements.
- Where appropriate a minimum of two and a maximum of ten high-resolution images and/or drawings, which illustrate the essential features of particular significance relating to the use of concrete. This material will be used for presentation purposes during the awards gala, as well subsequent marketing (print and digital channels) activity.

# CONCRETE CONSTRUCTION AWARDS 2025 ENTRY FORM

## PREFERRED AWARD CATEGORY

- |  |   |  |
|--|---|--|
| <input type="checkbox"/> Architectural Concrete (Monte Craven Award) | <input type="checkbox"/> Concrete Landscaping       | <input type="checkbox"/> Concrete Remediation and Reuse      |
| <input type="checkbox"/> Concrete Infrastructure                     | <input type="checkbox"/> Residential Concrete       | <input type="checkbox"/> Concrete Innovation                 |
| <input type="checkbox"/> Commercial Concrete                         | <input type="checkbox"/> Concrete for the Community | <input type="checkbox"/> Sustainable Concrete for the Planet |

## SECTION A

Name (building, structure or scheme)

Location

Type of project (eg. bridge, building, research work, design tool)

Date of completion

Contact person

Name and address (of organisation submitting entry)

Email

Phone

## SECTION B

### Owner\*

Address

Phone

### Client\* (if different from owner)

Address

Phone

### Architect\* (partner/principal involved with project)

Address

Phone

### Consulting Engineer\* (partner/principal involved with project)

Address

Phone

### Contractor\* (director/principal involved with project)

Address

Phone

### Other firms\* (ie. sub-contractors involved with concrete work in entry project)

#### 1. Name

Phone

Address

#### 2. Name

Phone

Address

#### 3. Name

Phone

Address

#### 4. Name

Phone

Address

## CLOSING DATE FOR ENTRIES FRIDAY 2 MAY 2025

Judging panel may select the appropriate categories for all entries. This form should be completed and returned together with the statement for judging and the appropriate entry fee no later than 2nd May 2025.

You may submit your entry electronically via email to [adam@concretenz.org.nz](mailto:adam@concretenz.org.nz) or send a hard copy to Concrete NZ, PO Box 448, Wellington 6140.

NB. This entry form must be accompanied by the written approval of the owner (see eligibility section (c) and all contributing parties must agree and nominate which of them will receive the trophy, 'the award recipient'. All material submitted in connection with entries becomes the property of Concrete NZ.

\* Collectively are contributing parties.

☐ Concrete NZ Member - 200.00

☐ Non-member - \$300.00

☐ Invoice me

Or prefer to pay by credit card: ☐ Visa ☐ Mastercard

Card number:

Expiry Date:

Cardholders name:

Signature:



# CHECKLIST

Before you submit your entry, please check you have included:

- 1** Completed entry form<sup>i</sup>.
- 2** Completed payment information.
- 3** Written description no more than 1,000 words.
- 4** Entry imagery – minimum of two and maximum of 10 high-resolution digital files.

*<sup>i</sup> The entry form must be accompanied by the written approval of the owner (see eligibility section (c)) and all contributing parties must agree and nominate which of them will receive the trophy; 'the award recipient'. All material submitted in connection with entries becomes the property of Concrete NZ.*

# BCITO

*He Hunga Hanga Mātou*

**building people**



#concreteawards2025  
[www.concreteawards.org.nz](http://www.concreteawards.org.nz)